

Miami Dade College
Office of the Vice Provost of Academic Affairs

February 19, 2016

MEMORANDUM

TO: Lenore Rodicio

FROM: Julie Alexander

All curriculum items included in this report were presented and discussed at the February 9, 2016, College CASSC meeting. Approval of curriculum items is for offering at all campuses and centers, all off campus sites, at Honors level and through Distance Education.

Curriculum Requiring Approval

1. **Library Science**

• **Existing Course Modification**

Effective Term: Fall (2016-1)

Affected Campus (es): North, Wolfson, Kendall, Homestead, InterAmerican, Hialeah, MDC-West, Centers, all off campus sites, at Honors level and through Distance Education.

Administrator (s): Carol Tulikangas/Erick Dominicis

Faculty: Jennifer Saxton

- **Motion:** **The Library Science discipline is requesting to modify the course title and description to SLO format.**

<u>Course No.</u>	<u>Course Title</u>
LIS2004	Introduction to Internet Research (Current) Strategies for Online Research (New)

-- OVER --

2. School of Education

- **Program Modifications**

Effective Term:

Fall 2016-1

Affected Campus (es):

North, Wolfson, Kendall, Homestead, InterAmerican, Hialeah, MDC-West, Centers, all off campus sites, at Honors level and through Distance Education.

Administrator (s):

Carol Tulikangas/Susan Neimand

Faculty:

Program Title:

Early Childhood Education

Degree Type:

Associate in Science (A.S.)

Program Code:

27014

CIP Code:

1413121004

Program Title:

Early Childhood Education - Preschool

Degree Type:

Associate in Science (A.S.)

Program Code:

27031

CIP Code:

1413121004

Program Title:

Early Childhood Education – Infant/Toddler

Degree Type:

Associate in Science (A.S.)

Program Code:

270132

CIP Code:

1413121004

Program Title:

Early Childhood Education - Administrators

Degree Type:

Associate in Science (A.S.)

Program Code:

270133

CIP Code:

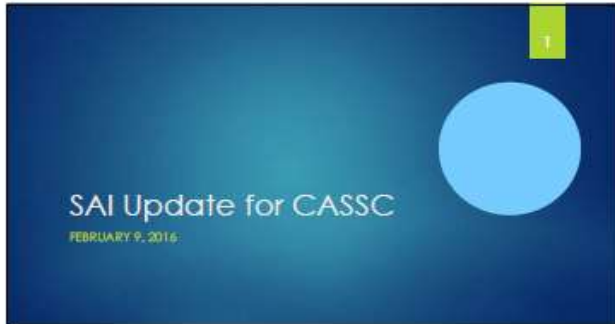
1413121004

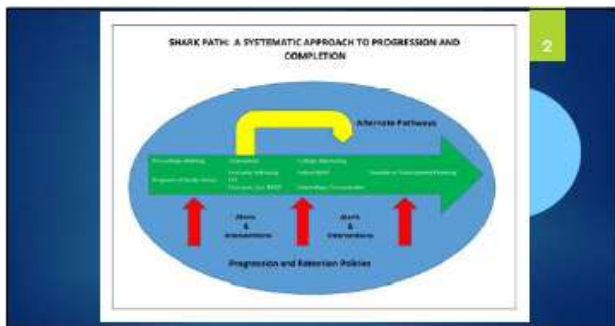
- **Motion:**

The School of Education is requesting to reduce required electives from 12 to 9 credits for the existing Associate in Science in Early Childhood Education and related track options in order to comply with the Florida Department of Education (FLDOE) 2015-2016 Change Document decreasing the program length (from 63 credits to 60 credits).

Detailed Agenda

3. Informational Item





-
- A blue gradient slide with a light blue circle on the right. The title is "Five Teams Actively Supporting Student Progression and Success". Below the title is the objective: "strengthen academic and student support throughout Shark Path". A list of five items follows:
- ▶ Early Alerts and Interventions
 - ▶ Progression and Retention Policies
 - ▶ Alternate Pathways
 - ▶ SLS/First Year Advising
 - ▶ College Mentoring
- A small green box with the number "3" is in the top right corner.

4. Approval of Minutes December 8, 2015

Curriculum Requiring Approval

5. Library Science

- **Existing Course Modification**

Effective Term: Fall (2016-1)

Affected Campus (es): North, Wolfson, Kendall, Homestead, InterAmerican, Hialeah, MDC-West, Centers, all off campus sites, at Honors level and through Distance Education.

Administrator (s): Carol Tulikangas/Erick Dominicis

Faculty: Jennifer Saxton

• **Motion:** **The Library Science discipline is requesting to modify the course title and description to SLO format.**

<u>Course No.</u>	<u>Course Title</u>	<u>Credits</u>	<u>Campus</u>	<u>Eff. Term</u>
LIS2004	Introduction to Internet Research (Current) Strategies for Online Research (New)	1	1, 2, 3,5,6,7, Ctr.	2016-1

Course Description: LIS 2004, Strategies for Online Research, focuses on critical thinking skills for online research. Students will learn how to access, evaluate, and use information efficiently and ethically. (1 hr. lecture).

VOTE: UNANIMOUS APPROVAL
 IN FAVOR 37
 OPPOSED 0
 ABSTAINED 0

6. School of Education

- Motion:** **The School of Education is requesting to reduce required electives from 12 to 9 credits for the existing Associate in Science in Early Childhood Education and related track options in order to comply with the Florida Department of Education (FLDOE) 2015-2016 Change Document decreasing the program length (from 63 credits to 60 credits).**

Administrator (s): Carol Tulikangas/Susan Neimand
Faculty:

- Program Modifications**

Program Title: Early Childhood Education
Degree Type: Associate in Science (A.S.)
Program Code: 27014
CIP Code: 1413121004
Effective Term: Fall 2016-1
Affected Campus (es): North, Wolfson, Kendall, Homestead, InterAmerican, Hialeah, MDC-West, Centers, all off campus sites, at Honors level and through Distance Education.

Proposed Modifications: Major Course Electives (Area 8):
Reduce required credits from 15 to 12 credits

VOTE:

UNANIMOUS APPROVAL	
IN FAVOR	37
OPPOSED	0
ABSTAINED	0

**ASSOCIATE IN SCIENCE DEGREE
PROGRAM OF STUDY: EARLY CHILDHOOD EDUCATION (27014)
EFFECTIVE TERM: Fall 2016 (2016-1)**

I. GENERAL EDUCATION REQUIREMENTS

1. COMMUNICATIONS (6.00 credits)

- | | |
|---|---|
| <input type="checkbox"/> ENC 1101 - English Composition 1 (3 credits) | <input type="checkbox"/> ENC 1102 - English Composition 2 (3 credits) |
|---|---|
-

2. ORAL COMMUNICATIONS (3.00 credits)

- | | |
|--|--|
| <input type="checkbox"/> LIT 2480 - Issues in Literature & Culture (3 credits) | <input type="checkbox"/> SPC 1017 - Fundamentals of Speech Communication (3 credits) |
|--|--|
-

3. HUMANITIES (6.00 credits)

Must take 3.0 credits from the following group.

- | | |
|--|--|
| <input type="checkbox"/> ARH 1000 - Art Appreciation (3 credits) | <input type="checkbox"/> MUL 1010 - Music Appreciation (3 credits) |
| <input type="checkbox"/> DAN 2100 - Dance Appreciation (3 credits) | <input type="checkbox"/> PHI 2604 - Critical Thinking/Ethics (3 credits) |
| <input type="checkbox"/> HUM 1020 - Humanities (3 credits) | |

- - - And - - -

Must take 3.0 credits from the following group.

- | | |
|---|--|
| <input type="checkbox"/> ARH 2740 - Cinema Appreciation (3 credits) | <input type="checkbox"/> THE 2000 - Theatre Appreciation (3 credits) |
| <input type="checkbox"/> LIT 2120 - A Survey of World Literature 2 (3 credits) | <input type="checkbox"/> PHI 2010 - Introduction to Philosophy (3 credits) |
| <input type="checkbox"/> MUL 2380 - Jazz and Popular Music in America (3 credits) | |
-

4. BEHAVIORAL/SOCIAL SCIENCE (9.00 credits)

Must take 3.0 credits from the following group.

- | | |
|--|--|
| <input type="checkbox"/> CLP 1006 - Psychology of Personal Effectiveness (3 credits) | <input type="checkbox"/> PSY 2012 - Introduction to Psychology (3 credits) |
|--|--|

- - - And - - -

Must take 6.0 credits from the following group.

- | | |
|---|---|
| <input type="checkbox"/> AMH 2020 - History of the US since 1877 (3 credits) | <input type="checkbox"/> ISS 1120 - The Social Environment (3 credits) |
| <input type="checkbox"/> ANT 2410 - Introduction to Cultural Anthropology (3 credits) | <input type="checkbox"/> ISS 1161 - The Individual in Society (3 credits) |
| <input type="checkbox"/> DEP 2000 - Human Growth and Development (3 credits) | <input type="checkbox"/> SYG 2000 - Introduction to Sociology (3 credits) |

5. MATHEMATICS (6.00 credits)

Must take 3.0 credits from the following group.

- [MGF 1106](#) - Mathematics for Liberal Arts 1 (3 credits)

--- And ---

Must take 3.0 credits from the following group.

- | | |
|---|--|
| <input type="checkbox"/> MAC 1105 - College Algebra (3 credits) | <input type="checkbox"/> MGF 1107 - Mathematics for Liberal Arts 2 (3 credits) |
|---|--|

6. COMPUTER COMPETENCY

Test type(s) needed:

- [CGS 1060](#) - Introduction to Microcomputer Usage (4 credits)

7. SCIENCE (6.00 credits)

- | | |
|--|---|
| <input type="checkbox"/> BSC 1005 - General Education Biology (3 credits) | <input type="checkbox"/> HUN 1201 - Essentials of Human Nutrition (3 credits) |
| <input type="checkbox"/> BSC 2250 - Natural History of South Florida (3 credits) | <input type="checkbox"/> PSC 1515 - Energy in the Natural Environment (3 credits) |

8. MAJOR COURSE ELECTIVE (~~15.00 credits~~) **12 credits**

- | | |
|---|--|
| <input type="checkbox"/> EEC 1000 - Introduction to Early Childhood Education (3 credits) | <input type="checkbox"/> EEC 2202 - Program Development in Early Childhood Education (3 credits) |
| <input type="checkbox"/> EEC 1200 - Early Childhood Curriculum 1 (3 credits) | <input type="checkbox"/> EEC 2407 - Facilitating Social Development (3 credits) |
| <input type="checkbox"/> EEC 1311 - Early Childhood Curriculum 2 (3 credits) | |
-

9. REQUIRED ELECTIVES (12.00 credits)

Must take 3.0 credits from the following group.

- | | |
|--|---|
| <input type="checkbox"/> EEC* | <input type="checkbox"/> EME 2071 - Educating Young Children for Digital Literacy in the 21st Century (3 credits) |
| <input type="checkbox"/> EDG 2943 - Educational Service Field Work (1.00 - 3.00 credits) | |

----- And -----

Must take 9.0 credits from the following group.

- | | |
|---|--|
| <input type="checkbox"/> EDF 1005 - Introduction to the Teaching Profession (3 credits) | <input type="checkbox"/> EME 2040 - Introduction to Technology for Educators (3 credits) |
| <input type="checkbox"/> EDF 2085 - Introduction to Diversity (3 credits) | |

The following course(s) are not allowed for credit in this area.
All Labs

* End of Program Sheet *

Program Title: Early Childhood Education - Preschool
Degree Type: Associate in Science (A.S.)
Program Code: 27031
CIP Code: 1413121004
Affected Campus (es): North, Wolfson, Kendall, Homestead, InterAmerican, Hialeah, MDC-
West, Centers, all off campus sites, at Honors level and through Distance
Education.

Proposed Modifications: Major Course Electives (Area 9):
Reduce required credits from 12 to 9 credits

VOTE:	UNANIMOUS APPROVAL	
	IN FAVOR	37
	OPPOSED	0
	ABSTAINED	0

ASSOCIATE IN SCIENCE DEGREE
PROGRAM OF STUDY: EARLY CHILDHOOD EDUCATION - PRESCHOOL (27031)
EFFECTIVE TERM: Fall 2016 (2016-1)

I. GENERAL EDUCATION REQUIREMENTS

1. COMMUNICATIONS (6.00 credits)

[ENC 1101](#) - English Composition 1 (3 credits)

[ENC 1102](#) - English Composition 2 (3 credits)

2. ORAL COMMUNICATIONS (3.00 credits)

[LIT 2480](#) - Issues in Literature & Culture (3 credits)

[SPC 1017](#) - Fundamentals of Speech Communication (3 credits)

3. HUMANITIES (3.00 credits)

[ARH 1000](#) - Art Appreciation (3 credits)

[MUL 1010](#) - Music Appreciation (3 credits)

[DAN 2100](#) - Dance Appreciation (3 credits)

[PHI 2604](#) - Critical Thinking/Ethics (3 credits)

[HUM 1020](#) - Humanities (3 credits)

4. BEHAVIORAL/SOCIAL SCIENCE (3.00 credits)

[CLP 1006](#) - Psychology of Personal Effectiveness (3 credits)

[PSY 2012](#) - Introduction to Psychology (3 credits)

5. MATHEMATICS (3.00 credits)

[MGF 1106](#) - Mathematics for Liberal Arts 1 (3 credits)

6. COMPUTER COMPETENCY

Test type(s) needed:

[CGS 1060](#) - Introduction to Microcomputer Usage (4 credits)

7. SCIENCE (6.00 credits)

[BSC 1005](#) - General Education Biology (3 credits)

[HUN 1201](#) - Essentials of Human Nutrition (3 credits)

[BSC 2250](#) - Natural History of South Florida (3 credits)

[PSC 1515](#) - Energy in the Natural Environment (3 credits)

8. MAJOR COURSE REQUIREMENTS (15.00 credits)

- | | |
|---|--|
| <input type="checkbox"/> EEC 1000 - Introduction to Early Childhood Education (3 credits) | <input type="checkbox"/> EEC 2202 - Program Development in Early Childhood Education (3 credits) |
| <input type="checkbox"/> EEC 1200 - Early Childhood Curriculum 1 (3 credits) | <input type="checkbox"/> EEC 2407 - Facilitating Social Development (3 credits) |
| <input type="checkbox"/> EEC 1311 - Early Childhood Curriculum 2 (3 credits) | |
-

9. MAJOR COURSE ELECTIVE (~~12.00 credits~~) **9 credits**

- | | |
|---|---|
| <input type="checkbox"/> EEC 1001 - Introduction to Early Childhood Infant/Toddler Education (3 credits) | <input type="checkbox"/> EEC 2401 - Family Interaction and Cultural Continuity (3 credits) |
| <input type="checkbox"/> EEC 1522 - Infant and Toddler Environments (3 credits) | <input type="checkbox"/> EEC 2601 - Observation and Assessment in Early Childhood (3 credits) |
| <input type="checkbox"/> EEC 2221 - Curriculum High/Scope Approach (3 credits) | <input type="checkbox"/> EEC 2201 - Developing Curriculum for Infants and Toddlers (3 credits) |
| <input type="checkbox"/> EEC 2224 - Emergent Literacy through the Use of Children's Literature (3 credits) | <input type="checkbox"/> EDG 2943 - Educational Service Field Work (1.00 - 3.00 credits) |
| <input type="checkbox"/> EEC 2271 - Working with Young Children with Special Needs and their Families (3 credits) | <input type="checkbox"/> EME 2071 - Educating Young Children for Digital Literacy in the 21st Century (3 credits) |
-

10. REQUIRED ELECTIVES (12.00 credits)

Must take 3.0 credits from the following group.

- | | |
|--|--|
| <input type="checkbox"/> MAT 1033 - Intermediate Algebra (3 credits) | <input type="checkbox"/> MGF 1107 - Mathematics for Liberal Arts 2 (3 credits) |
|--|--|

- - - And - - -

Must take 9.0 credits from the following group.

- | | |
|---|--|
| <input type="checkbox"/> EDF 1005 - Introduction to the Teaching Profession (3 credits) | <input type="checkbox"/> EME 2040 - Introduction to Technology for Educators (3 credits) |
| <input type="checkbox"/> EDF 2085 - Introduction to Diversity (3 credits) | |

* End of Program Sheet *

Program Title: Early Childhood Education – Infant/Toddler
Degree Type: Associate in Science (A.S.)
Program Code: 270132
CIP Code: 1413121004
Affected Campus (es): North, Wolfson, Kendall, Homestead, InterAmerican, Hialeah, MDC-
West, Centers, all off campus sites, at Honors level and through Distance
Education.

Proposed Modifications: Major Course Electives (Area 9):
Reduce required credits from 15 to 12 credits

VOTE: UNANIMOUS APPROVAL
IN FAVOR 37
OPPOSED 0
ABSTAINED 0

ASSOCIATE IN SCIENCE DEGREE
PROGRAM OF STUDY: EARLY CHILDHOOD EDUCATION - INFANT TODDLER (27032)
EFFECTIVE TERM: Fall 2016 (2016-1)

I. GENERAL EDUCATION REQUIREMENTS

1. COMMUNICATIONS (6.00 credits)

- [ENC 1101](#) - English Composition 1 (3 credits) [ENC 1102](#) - English Composition 2 (3 credits)
-

2. ORAL COMMUNICATIONS (3.00 credits)

- [LIT 2480](#) - Issues in Literature & Culture (3 credits) [SPC 1017](#) - Fundamentals of Speech Communication (3 credits)
-

3. HUMANITIES (3.00 credits)

- [ARH 1000](#) - Art Appreciation (3 credits) [MUL 1010](#) - Music Appreciation (3 credits)
 [DAN 2100](#) - Dance Appreciation (3 credits) [PHI 2604](#) - Critical Thinking/Ethics (3 credits)
 [HUM 1020](#) - Humanities (3 credits)
-

4. BEHAVIORAL/SOCIAL SCIENCE (3.00 credits)

- [CLP 1006](#) - Psychology of Personal Effectiveness (3 credits) [PSY 2012](#) - Introduction to Psychology (3 credits)
-

5. MATHEMATICS (3.00 credits)

- [MGF 1106](#) - Mathematics for Liberal Arts 1 (3 credits)
-

6. COMPUTER COMPETENCY

Test type(s) needed:

- [CGS 1060](#) - Introduction to Microcomputer Usage (4 credits)
-

7. SCIENCE (6.00 credits)

- [BSC 1005](#) - General Education Biology (3 credits) [HUN 1201](#) - Essentials of Human Nutrition (3 credits)
 [BSC 2250](#) - Natural History of South Florida (3 credits) [PSC 1515](#) - Energy in the Natural Environment (3 credits)
-

8. MAJOR COURSE REQUIREMENTS (12.00 credits)

- | | |
|--|--|
| <input type="checkbox"/> EEC 1001 - Introduction to Early Childhood Infant/Toddler Education (3 credits) | <input type="checkbox"/> EEC 2201 - Developing Curriculum for Infants and Toddlers (3 credits) |
| <input type="checkbox"/> EEC 1522 - Infant and Toddler Environments (3 credits) | <input type="checkbox"/> EEC 2407 - Facilitating Social Development (3 credits) |
-

9. MAJOR COURSE ELECTIVE (15.00-credits) **12 credits**

- | | |
|--|---|
| <input type="checkbox"/> EEC 1000 - Introduction to Early Childhood Education (3 credits) | <input type="checkbox"/> EEC 2271 - Working with Young Children with Special Needs and their Families (3 credits) |
| <input type="checkbox"/> EEC 1200 - Early Childhood Curriculum 1 (3 credits) | <input type="checkbox"/> EEC 2401 - Family Interaction and Cultural Continuity (3 credits) |
| <input type="checkbox"/> EEC 1311 - Early Childhood Curriculum 2 (3 credits) | <input type="checkbox"/> EEC 2601 - Observation and Assessment in Early Childhood (3 credits) |
| <input type="checkbox"/> EEC 2202 - Program Development in Early Childhood Education (3 credits) | <input type="checkbox"/> EDG 2943 - Educational Service Field Work (1.00 - 3.00 credits) |
| <input type="checkbox"/> EEC 2221 - Curriculum High/Scope Approach (3 credits) | <input type="checkbox"/> EME 2071 - Educating Young Children for Digital Literacy in the 21st Century (3 credits) |
| <input type="checkbox"/> EEC 2224 - Emergent Literacy through the Use of Children's Literature (3 credits) | |
-

10. REQUIRED ELECTIVES (12.00 credits)

Must take 3.0 credits from the following group.

- | | |
|--|--|
| <input type="checkbox"/> MAT 1033 - Intermediate Algebra (3 credits) | <input type="checkbox"/> MGF 1107 - Mathematics for Liberal Arts 2 (3 credits) |
|--|--|

- - - And - - -

Must take 9.0 credits from the following group.

- | | |
|---|--|
| <input type="checkbox"/> EDF 1005 - Introduction to the Teaching Profession (3 credits) | <input type="checkbox"/> EME 2040 - Introduction to Technology for Educators (3 credits) |
| <input type="checkbox"/> EDF 2085 - Introduction to Diversity (3 credits) | |

* End of Program Sheet *

Program Title: Early Childhood Education - Administrators
Degree Type: Associate in Science (A.S.)
Program Code: 270133
CIP Code: 1413121004
Affected Campus (es): North, Wolfson, Kendall, Homestead, InterAmerican, Hialeah, MDC-
West, Centers, all off campus sites, at Honors level and through Distance
Education.

Proposed Modifications: Major Course Electives (Area 9):
Reduce required credits from 12 to 9 credits

VOTE: UNANIMOUS APPROVAL
IN FAVOR 37
OPPOSED 0
ABSTAINED 0

ASSOCIATE IN SCIENCE DEGREE
PROGRAM OF STUDY: EARLY CHILDHOOD EDUCATION - ADMINISTRATORS (27033)
EFFECTIVE TERM: Fall 2016 (2016-1)

I. GENERAL EDUCATION REQUIREMENTS

1. COMMUNICATIONS (6.00 credits)

[ENC 1101](#) - English Composition 1 (3 credits)

[ENC 1102](#) - English Composition 2 (3 credits)

2. ORAL COMMUNICATIONS (3.00 credits)

[LIT 2480](#) - Issues in Literature & Culture (3 credits)

[SPC 1017](#) - Fundamentals of Speech Communication (3 credits)

3. HUMANITIES (3.00 credits)

[ARH 1000](#) - Art Appreciation (3 credits)

[MUL 1010](#) - Music Appreciation (3 credits)

[DAN 2100](#) - Dance Appreciation (3 credits)

[PHI 2604](#) - Critical Thinking/Ethics (3 credits)

[HUM 1020](#) - Humanities (3 credits)

4. BEHAVIORAL/SOCIAL SCIENCE (3.00 credits)

[CLP 1006](#) - Psychology of Personal Effectiveness (3 credits)

[PSY 2012](#) - Introduction to Psychology (3 credits)

5. MATHEMATICS (3.00 credits)

[MGF 1106](#) - Mathematics for Liberal Arts 1 (3 credits)

6. COMPUTER COMPETENCY

Test type(s) needed:

[CGS 1060](#) - Introduction to Microcomputer Usage (4 credits)

7. SCIENCE (6.00 credits)

[BSC 1005](#) - General Education Biology (3 credits)

[HUN 1201](#) - Essentials of Human Nutrition (3 credits)

[BSC 2250](#) - Natural History of South Florida (3 credits)

[PSC 1515](#) - Energy in the Natural Environment (3 credits)

8. MAJOR COURSE REQUIREMENTS (15.00 credits)

- | | |
|--|---|
| <input type="checkbox"/> EEC 2002 - Operation of an Early Childhood Facility (3 credits) | <input type="checkbox"/> EEC 2523 - Programming & Management for Early Childhood Administrators (3 credits) |
| <input type="checkbox"/> EEC 2407 - Facilitating Social Development (3 credits) | <input type="checkbox"/> EEC 2527 - Legal & Financial Issue in Child Care (3 credits) |
| <input type="checkbox"/> EEC 2520 - Early Childhood Organization leadership and management (3 credits) | |
-

9. MAJOR COURSE ELECTIVE (12.00-credits) **9 credits**

- | | |
|--|---|
| <input type="checkbox"/> EEC 1000 - Introduction to Early Childhood Education (3 credits) | <input type="checkbox"/> EEC 2224 - Emergent Literacy through the Use of Children's Literature (3 credits) |
| <input type="checkbox"/> EEC 1001 - Introduction to Early Childhood Infant/Toddler Education (3 credits) | <input type="checkbox"/> EEC 2271 - Working with Young Children with Special Needs and their Families (3 credits) |
| <input type="checkbox"/> EEC 1200 - Early Childhood Curriculum 1 (3 credits) | <input type="checkbox"/> EEC 2401 - Family Interaction and Cultural Continuity (3 credits) |
| <input type="checkbox"/> EEC 1311 - Early Childhood Curriculum 2 (3 credits) | <input type="checkbox"/> EEC 2601 - Observation and Assessment in Early Childhood (3 credits) |
| <input type="checkbox"/> EEC 1522 - Infant and Toddler Environments (3 credits) | <input type="checkbox"/> EEC 2201 - Developing Curriculum for Infants and Toddlers (3 credits) |
| <input type="checkbox"/> EEC 2202 - Program Development in Early Childhood Education (3 credits) | <input type="checkbox"/> EDG 2943 - Educational Service Field Work (1.00 - 3.00 credits) |
| <input type="checkbox"/> EEC 2221 - Curriculum High/Scope Approach (3 credits) | <input type="checkbox"/> EME 2071 - Educating Young Children for Digital Literacy in the 21st Century (3 credits) |
-

10. REQUIRED ELECTIVES (12.00 credits)

Must take 3.0 credits from the following group.

- | | |
|--|--|
| <input type="checkbox"/> MAT 1033 - Intermediate Algebra (3 credits) | <input type="checkbox"/> MGF 1107 - Mathematics for Liberal Arts 2 (3 credits) |
|--|--|

- - - And - - -

Must take 9.0 credits from the following group.

- | | |
|---|--|
| <input type="checkbox"/> EDF 1005 - Introduction to the Teaching Profession (3 credits) | <input type="checkbox"/> EME 2040 - Introduction to Technology for Educators (3 credits) |
| <input type="checkbox"/> EDF 2085 - Introduction to Diversity (3 credits) | |

* End of Program Sheet *