

Find the right doctor

DocFind® Online Directory

Looking for a new primary care doctor? In need of a dentist or orthodontist? Do you want to find a specialist, hospital or special care facility?

Maybe you're thinking about signing up for an Aetna[‡] health benefits or health insurance plan. If so, you want to make sure your docs are in our network.

Now you can find what you need — fast. Our DocFind online directory is your answer.

It's great to have a ready resource!

You can rely on one website that's easy to use. It lets you find doctors and facilities for virtually any need. Search by:

- City, state, zip
- Specialty
- Hospital relationship
- Provider name
- Gender

You can also get extra information:

- Plans accepted by each doctor
- Medical schools attended
- Board certification status
- Languages spoken

Plus, check out:

- Office locations
- Handicap access
- Maps and driving directions

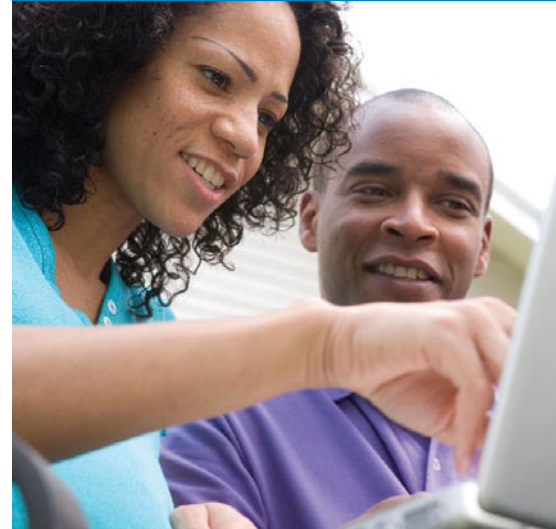
Tap into the latest information

We update our DocFind online directory three times a week. This makes sure you have the latest information on participating doctors and facilities.

You can even see a listing of transplant and children's heart surgery facilities. They're included in our Institutes of Excellence™ network.

Talk about a terrific resource!

Search for health care professionals — anytime, anywhere you have Internet access.



¿Necesita DocFind en español?

¡No hay problema! Simplemente haga clic en el botón "Versión en español" en la parte superior de la página principal de *DocFind* para cambiar a la versión en español.

[‡]The Aetna companies that offer, underwrite or administer benefits coverage include Aetna Health Inc., Aetna Health of California Inc., Aetna Health of the Carolinas Inc., Aetna Health of Illinois Inc., Aetna Health Insurance Company of New York, Corporate Health Insurance Company and/or Aetna Life Insurance Company. In Arizona and Texas, in-network and out-of-network referred benefits are underwritten by Aetna Health Inc. or Aetna Life Insurance Company. For self-funded accounts, benefits coverage is provided by your employer with administrative services only provided by Aetna Life Insurance Company.

**Find what you need.
Use the DocFind online
directory. It's fast and
easy!**



DocFind can do the work for you

If you're an Aetna member, you can register on your secure Aetna Navigator™ member website. Once you do, you'll get a personalized version of DocFind.

Each time you sign on, it automatically fills in your plan name and zip code. That makes your search even easier!

And while you're on Aetna Navigator:

- Check on the status of a claim
- Ask for ID cards
- Contact Member Services

To log on to DocFind...

Aetna Members: Sign on to your Aetna Navigator member website. Click on "Find Doctors, Dentists & Facilities."

Nonmembers: Go to www.aetna.com. Click on "Find a Doctor."

Questions while you're searching? Click the "Contact DocFind" link at the top of any page. This lets you send us your question or comment.

Need a paper directory?

If you're an Aetna member and don't have computer or Internet access, no problem. Just call the toll-free Member Services number on your Aetna ID card. If you're not yet a member, call 1-888-87-AETNA (1-888-872-3862).

If you need this material translated into another language, please call Member Services at 1-888-98-AETNA (1-888-982-3862).

Si usted necesita este documento en otro idioma, por favor llame a Servicios al Miembro al 1-888-98-AETNA (1-888-982-3862).

Plan features and availability may vary by location and are subject to change. Providers are independent contractors and are not agents of Aetna. Provider participation may change without notice. Aetna does not provide care or guarantee access to health services. Health benefits and health insurance plans contain exclusions and limitations. Information subject to change. For more information about Aetna plans, refer to www.aetna.com.

Policy forms issued in Oklahoma include: HMO/OK COC-4 09/02, HMO/OK GA-3 11/01, CHI/OK GP-302/02, CHI/OK INSCT-4 01/02, GR-23 and/or GR-29.