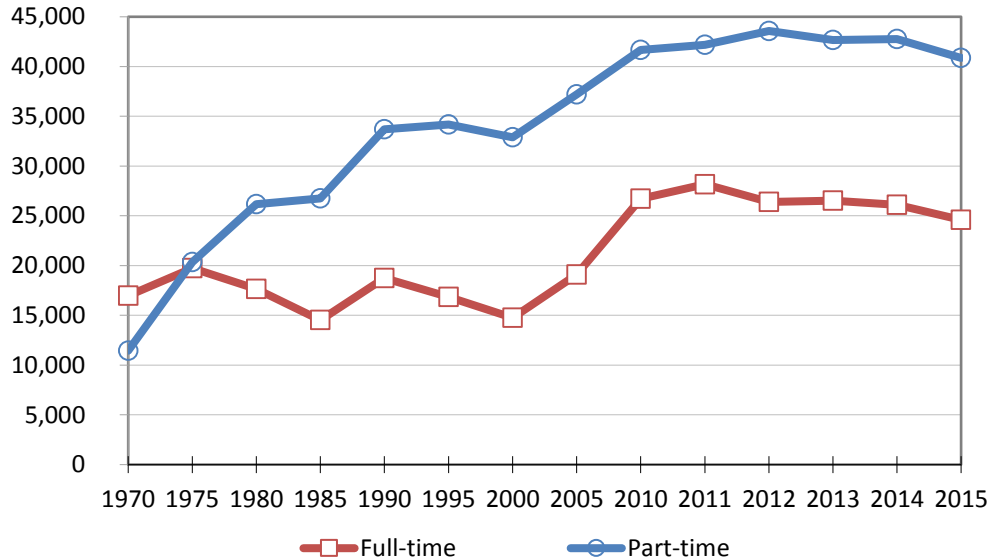


Change in Full-Time and Part-Time Status

- 62% of credit students are enrolled part-time in Fall 2015.
- The number of part-time students has more than tripled since 1970.



Credit Students Enrolled in Fall Term

Fall Term	Full-time	Part-time	Total
1970	16,959	11,450	28,409
1975	19,744	20,355	40,099
1980	17,662	26,160	43,822
1985	14,517	26,752	41,269
1990	18,753	33,708	52,461
1995	16,841	34,178	51,019
2000	14,756	32,881	47,637
2005	19,103	37,189	56,292
2010	26,714	41,662	68,376
2011	28,174	42,176	70,350
2012	26,384	43,575	69,959
2013	26,517	42,676	69,193
2014	26,097	42,768	68,865
2015	24,609	40,870	65,479

Source: Fall Profile.