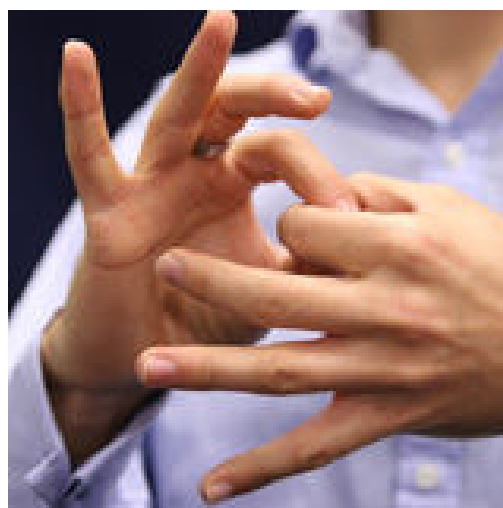


Earn an Associate of Science degree in

Sign Language Interpretation

Program Code:
23033



A Sign Language Interpreter is a person specially trained to facilitate communication between the deaf, hard of hearing and hearing communities. Interpreters need to be flexible, objective, self-disciplined, self-motivated, and sensitive to others. If this describes you, you may have a successful and rewarding career as an interpreter.

The Interpretation Program at MDC, North Campus begins with American Sign Language 2. Therefore, students must previously have acquired some basic skill and knowledge in the language. This is often obtained through high school courses, non-credit classes in the community or informal contact with deaf persons. In addition, the program is designed with flexibility to allow students with no previous knowledge or skill to enter. Such students should begin with the elective courses of American Sign Language 1 and 2.



Where Can I Work? How Much Can I Earn?*

Sign language interpreting is a rapidly expanding field. Schools, government agencies, and private businesses employ interpreters. Interpreters work in a variety of settings including medical, legal, religious, mental health, rehabilitation, performing arts, and business. Part-time, full-time, freelance and salaried positions are available in most metropolitan areas across the country.

A majority of new interpreter training program graduates get jobs in the school systems, where they receive a full-time salary and benefits. Others work with interpreter referral agencies as freelance interpreters. This offers them flexibility in hours and job settings, but may not provide 40 hours per week in assignments. In general, the demand for interpreters is in medium-to-large cities.

Freelance (per diem)	\$15-50/hour
Staff Interpreter (school, business, government agency, etc)	\$35,000 - \$50,000/year
Specialist (highly skilled and credentialed interpreters specializing in legal, medical, etc.)	\$50,000 +



Source: monster.com, 2006

For more information, please call
English & Communications Department
at 305-237-1300
or visit <http://www.mdc.edu/north/english/signlanguage.asp>

Associate of Science Degree in Sign Language Interpretation

What Does MDC Offer?

Miami-Dade College, North Campus, offers an Associate of Science (A.S.) degree in Sign Language Interpretation. The program is designed to develop the skills necessary to interpret the communications between deaf or hard of hearing persons and hearing individuals in an accurate and effective manner. Also developed is a practical understanding of aspects of deaf studies and deaf culture and community. In addition, the program will provide a foundation for those persons who wish to pursue advanced degrees in preparation for careers in special education, vocational rehabilitation or other human service fields.



ELECTIVE COURSES - 7 Credits***

***At least one course must be unrelated to the major.

Elective credits are to be earned from the following list of courses:

ASL1140C	American Sign Language 1	4 Credits
DEP 2000	Human Growth and Development	3 Credits
EDF 1005	Introduction to Education	3 Credits
EEX 2000	Introduction to Special Education	3 Credits
HUS 1001	Introduction to Human Services	3 Credits
LIN 2670	Modern English Grammar	3 Credits
PAD 2002	Introduction to Public Administration	3 Credits
PCO 2731	Human Relations	3 Credits
PSY 2012	Introduction to Psychology	3 Credits
SOP 2002	Social Psychology	3 Credits
SPA 1906	Directed Independent Studies	1-2 Credits
SPA 2001	Introduction to Communication Disorders	3 Credits
SPC 2050	Voice and Diction	3 Credits
TPP 1100	Acting 1	3 Credits

SUBJECT MAJOR COURSES - 50 Credits

Students must complete the following courses in Sign Language, aspects of Deaf studies and interpreting:

ASL 1150C	American Sign Language 2	4 Credits
ASL 1630	Survey of Deaf Studies	3 Credits
ASL 2160C	American Sign Language 3	4 Credits
ASL 2200C	American Sign Language 4	4 Credits
ASL 2210	Conversational Skills	3 Credits
ASL 2220	ASL Receptive Skills Development	3 Credits
ASL 2400	Linguistics of American Sign Language	3 Credits
ASL 2430	Fingerspelling Skills Development	3 Credits
ASL 2510	Deaf Culture and Community	3 Credits
EHD 1400	Interpreting Ethics and Professionalism	3 Credits
EHD 1401	Voice to Sign Interpreting	3 Credits
EHD 1402	Sign to Voice Interpreting	3 Credits
EHD 1408	Educational Interpreting	3 Credits
EHD 1409	Interpreting: Special Settings & Populations	3 Credits
EHD 1941	Interpreting Internship / Practicum	5 Credits

GENERAL EDUCATION COURSES - 15 Credits

These courses are required for all Associate of Science degrees.

ENC 1101	English Composition	3 Credits
SPC 1026	Fundamentals of Speech Communication	3 Credits
PHI 2604	Critical Thinking and Ethics	3 Credits
CLP 1006	Psychology of Personal Effectiveness	3 Credits
	(See Below) Math / Science	3 Credits

3 credits (excluding labs) may be earned from any of the following courses: *Math*: MAC, MAD, MAP, MAS, MGF, MTB, QMB, STA
Science: AST 1002, BOT, BSC CHM, GLY, HUN 1201, MCB, MET, OCE, PCB 2033, PSC, PHY, ZOO

Contact Us

English & Communications Department
 Miami Dade College, North Campus
 11380 NW 27th Avenue
 Miami, FL 33167
 305-237-1300

Visit Our Website

www.mdc.edu/north/english