

# HAL<sup>®</sup> S3009

---

Premature neonatal simulator

- Simulation Made Easy™
- Proven HAL<sup>®</sup> technology
- Tetherless with wireless communication
- Fully responsive even while being carried
- Modeling and trending
- Comprehensive performance feedback

# Premie HAL® S3009... tetherless and fully responsive while been carried



New silicone umbilicus with two arteries and one vein for UAC, UVC and cord cutting. Pulse synchronized with ECG.



## Airway

- Oral and nasal intubation
- Use an ET tube or LMA
- Multiple upper airway sounds synchronized with breathing

## Breathing

- Control rate and depth of respiration and observe chest rise
- Ventilation is measured and logged
- Select left and/or right chest wall movement and lung sound
- Chest rise and lung sounds are synchronized with selectable breathing patterns
- Accommodates assisted ventilation, including BVM and mechanical support

## Circulation and color change

- Multiple heart sounds, rates and intensities
- Chest compressions are measured and logged
- Color and vital signs respond to hypoxic events and interventions
- Bilateral, brachial and femoral pulses; pulses at fontanelle and umbilicus
- Pulse strengths vary with blood pressure and pulses are synchronized with ECG
- Temperature probe placement sensor

## Tetherless

- Premie is fully responsive even when carried
- No tubes or wires to worry about

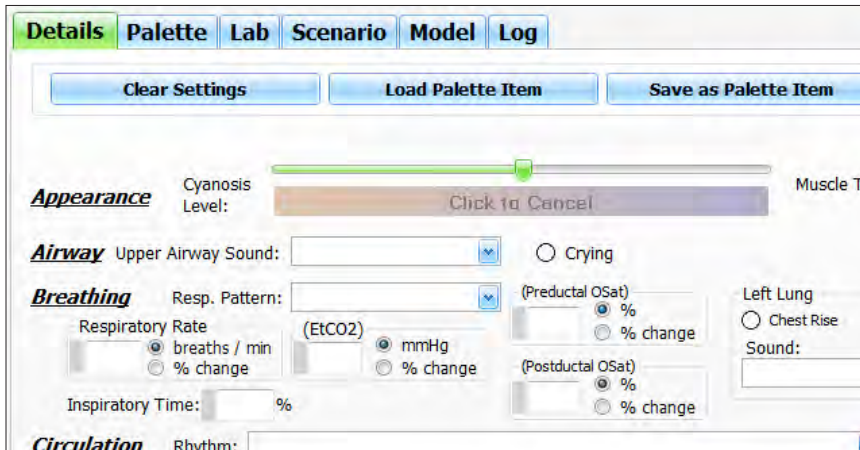
## File Sharing

- Provide students with images such as x-rays, CT scans, lab results, or even multimedia presentations as the scenario progress

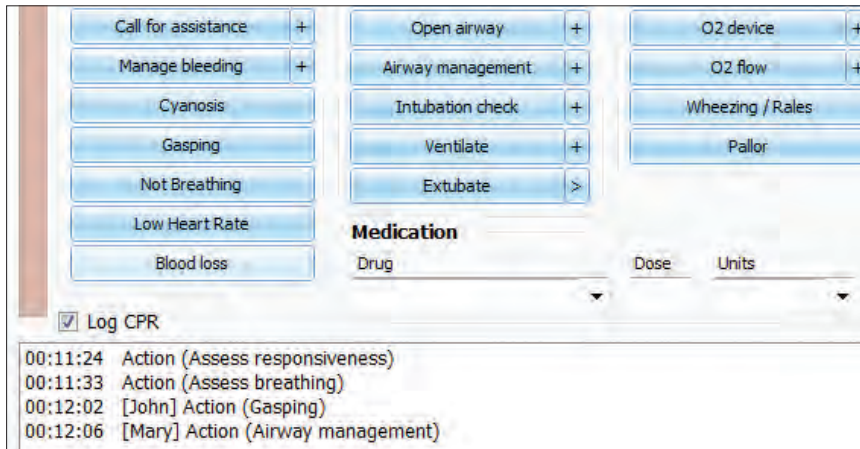
## Control

- Change physiologic states “on the fly” using wireless control
- Use our scenarios, modify them or quickly build your own
- Sensors provide performance feedback
- Changes in condition and care are time stamped and logged
- Instructors evaluate interventions and insert notes on real-time performance log

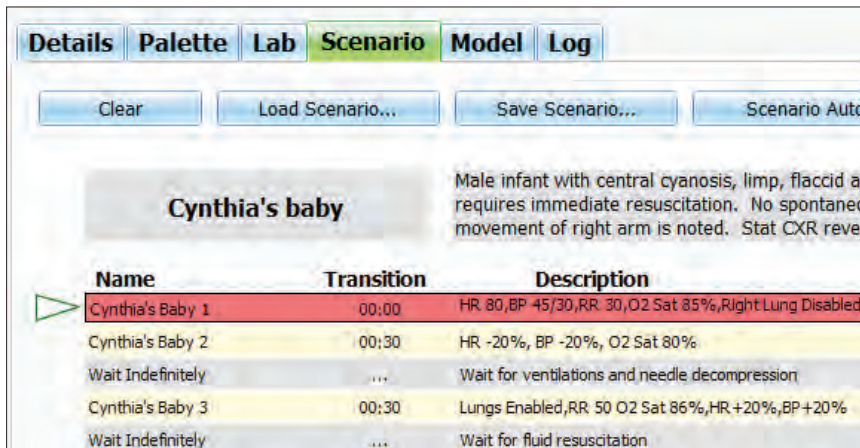
# Premie HAL® S3009... learn to care for the compromised newborn



Use this hypoxic model which is responsive to actions of care providers or retain control of the newborn's color and vital signs.



Real time performance log tracks the action of up to six care providers. Actions are logged and time stamped for debriefing purposes



Use our scenarios, modify them or quickly build your own

## ECG

- View ECGs with physiologic variations generated in real-time
- Synchronized with pulses
- Conductive skin regions
- Apply real electrodes

## Hypoxic Modeling

- Color, and vital signs respond to hypoxic events and interventions

## Sounds

- Crying synchronized with breathing
- Heart sounds include a normal heart as well as atrial and ventricular septal defects
- Respiratory sounds include both normal lungs as well as stridor and grunting

## Venous access

- Bilateral dorsum of hand
- Patent umbilicus
- Intraosseous access at tibia
- Left foot

## HAL S3009 includes

- Internal rechargeable NiMH power
- Instructor's 12 inch tablet PC with stylus control, "bump" case and docking station for tetherless operation
- Carrying case
- 10 scenarios
- 100-240 VAC charger
- Instructions
- DVD tutorial
- One year warranty

HAL S3009 |



# Premie HAL® S3009... tetherless with wireless communication



## Optional Add-Ons

### 20" All-in-one Touch Screen PC to display vital signs

- Controlled via wireless tablet PC
- Simulated vital signs
- Use selected configuration or create your own configuration to mimic the real monitors used in your facility
- Customize alarms
- Easy to operate and control
- Reflect simulator's condition during the scenario
- Share images such as ultrasounds, CT scans, lab results
- Touchscreen control
- Monitor can be configured by the instructor to suit the scenario
- Display up to 12 numeric parameters
- Select up to 12 dynamic waveforms

### S3009.001.R2 |

### 12" Touch Screen Tablet to display vital signs

- Controlled via wireless tablet PC
- Simulated vital signs
- Use selected configuration or create your own configuration to mimic the real monitors used in your facility
- Customize alarms
- Easy to operate and control
- Reflect simulator's condition during the scenario
- Share images such as ultrasounds, CT scans, lab results
- Touchscreen control

- Monitor can be configured by the instructor to suit the scenario
- Display up to 12 numeric parameters
- Select up to 12 dynamic waveforms

### S3009.002 |

### Pro+ recording and debriefing system

- Control both simulation and recording simultaneously using one PC
- Capture multiple video, audio, and patient monitors, as well as simulator log file for debriefing
- Use in a fixed simulation laboratory or at a mobile location
- Two wireless and one wired camera

### S3009.211 |

### Automatic "physiologic" mode

- Intuitive interface and automaticity makes simulation easy
- Vital signs are generated in real time
- Drug library with medications
- Use of medications change conditions in real time mimicking real clinical situations

### S3009.600 |

### Two Year Extended Warranty

### S3009.EXW |

### Day of In-service Training and Installation

### S3009.INST |