

STUDIO THEATER TECHNICAL SPECIFICATIONS

Rigging: Rigid Grid of 16 x 5 Pipes

Grid Height/Working Height: 11' 9"

Stage Area Dimensions: 26' 7" Wide x 44' 4" Deep

Retractable Bleacher Seating: 26' 7" Wide x 20' 4" Deep for 80 seats

Drapery: Two (2) black backdrops

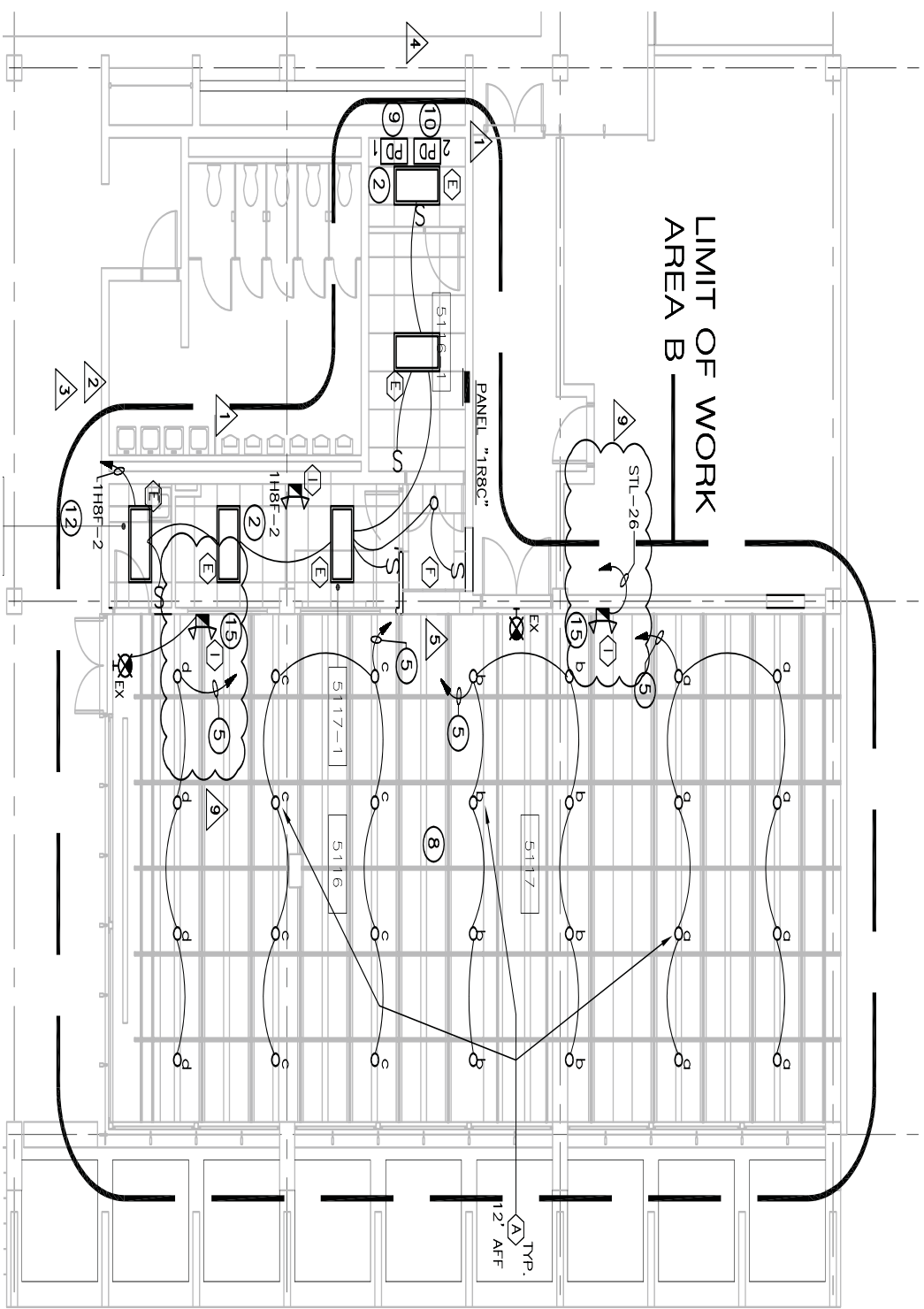
One (one) White backdrop

Three (3) sets of black borders and legs

Motorized blinds on all windows



LIMIT OF WORK AREA B



LIGHTING SYSTEM

ETC Element Lighting Console
15 Dimmer Sets - Total of 50 Dimmers

Lamps: (Lamp availability dependent on current lamp inventory)

- (60) ETC Source Four
- (40) ETC PARnel
- (8) Small Leko
- (8) Battans
- (4) Double-Hung Box Truss with 12 Par64

No standard light plot. Grid is stripped post event.

AUDIO SYSTEM

Yamaha 01V96i Audio Console
Total 32 CHANNELS (32 from board – 10 from wall mounted USL patch bay)
8 Bus Sends/8 Aux Sends
House Speakers - 5.1 Renkus-Heinz System – 2 Subs / 4 12-Inch Loudspeakers

Sony CDP-CE375 5-disc CD Player

Microphones: (Mic availability dependent on current mic inventory)

- SM58
- Shure 57
- Shure Beta 57
- Shure Beta 87
- Shure 27
- Shure 819
- Sennheiser e904
- Sennheiser e902
- Sennheiser PG 81
- Crown PCC 160
- Crown PZM
- Audio-Technica 857AM
- Shure Wireless SM 58
- Shure Wireless Lavalier

4-Channel Clear Com System

VIDEO/PROJECTION SYSTEM

Panasonic DW 6300 WXGA Projector
13'5" W x 8'H Projection Screen
One (1) - VGA i/o with 1/8th in. Mini-Pin in for Audio